

USB 3.0 Express Card

User Manual



SHUSB3EX

shintaro.com.au



USB 3.0 Express Card

Contents

Copyright Information.....	4
Precaution.....	5
General Information.....	6
Functions.....	7
Use of Express Card.....	8
Driver Installation.....	9
Product Specifications.....	11

Copyright Notice

This document is copyrighted. The information provided in this document has been carefully checked for accuracy at the time of publication. No representations or warranties, either expressed or implied, with respect to the contents hereof and specifically disclaims any warranties, merchantability or fitness for any particular purpose.

Any software described in this manual is sold or licensed “as is”. Should the programs prove defective following their purchase, the buyer assumes the entire cost of all necessary servicing, repair, and any incidental or consequential damages resulting from any defect in the software.

The manufacturer reserves the right to revise this publication and to make changes from time to time in the contents hereof without obligation to notify any person of such revision or changes.

No part of this publication may be reproduced, stored in a retrieval system, or transmitted in any form of or via any means without the prior written permission of the manufacturer.

Trademark Acknowledgement

All brand, company and product names used for identification in this document are trademarks or registered trademarks of their respective companies.

© Copyright 2009, Version 1.0

All rights reserved.

Printed in Taiwan

Important Precaution

Before getting started, read these instructions and save them for later reference.

1. Before connecting the Express card to the laptop, read through this user's guide. In some operating systems, the drive software must be installed prior to operation.
2. Do not insert with strong force, as doing so may severely damage the product.
3. Be careful not to injure yourself by catching your fingers when loading the SHUSB3EX or USB devices.
4. Do not disassemble or modify the product in any way. Disassembly or modification may not only void warranty but could cause damage or lead to fire or electric shock.
5. Do not use or store the product in damp locations or under high temperature.
6. Liquid entering the product also may cause damage or lead to fire or electric shock.

General Information

SHUSB3EX is a dual-port super-speed Express Card. You can insert USB device into this device and through Express slot on laptop to transfer the data.

The Express Card works up to 5Gbps for data transfer when connecting to USB3.0 compliant peripherals, while maintaining compatibility with existing USB peripheral devices. And it is also with USB Hot-Swapping and Plug-n-Play function.

Key Features

- Compliant spec. to USB3.0 Rev. 1.0.
- Compliant spec. to Intel xHCI Rev 0.96
- Compliant spec. to PCI Express 2.0 interface.
- Support Super-Speed data transfer rate up to 5.0Gbps.
- Provide USB3.0 interface compatible with prior USB2.0 standard.
- More power at the connector, Max. 900mA.
- Built-in DC jack for receiving extra power supply.
- Support Express Card™ 34mm slot
- Support hot swapping and Plug-and Play capability.

System Requirements

A laptop with an Express Card 34 slot.

Package Contents

USB 3.0 Express Card

USB to DC Jack Cable

Driver Disk

Functions

● **Express Card slot connector**
To be inserted into a Express Card 34-type slot.

● **Slot guide rail**
To be loaded along the guide rail of the Express Card slot.

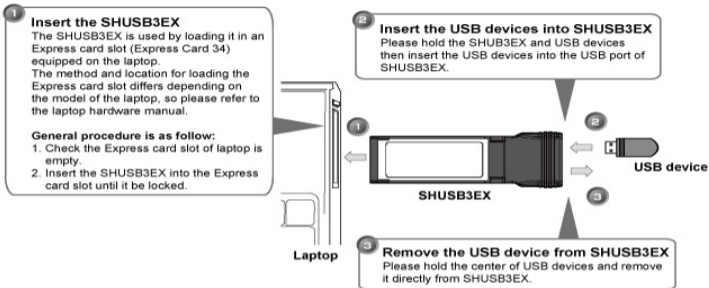
⚠ Needed additional DC power adapter when insert two USB device with high current simultaneously.

● **DC jack**
To connect DC power when use with HDD enclosure or device with high current needed.

● **USB 3.0 ports**
To insert the USB device.



Use of Express Card



Note: Please do not remove the USB device while data is being transmitting, this may cause your computer to crash and lost your valuable data.

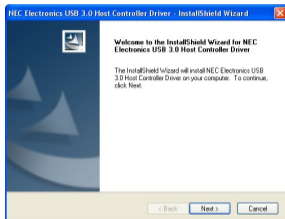
Driver Installation

Before you start to use SHUSB3EX, please install the driver first (Windows XP/VISTA/7)

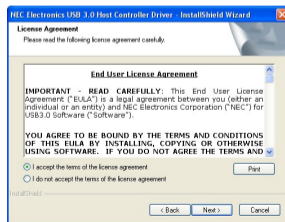
1. Insert program disc into the CD-ROM/DVD-ROM drive.
2. Click SHUSB3EX
4. Click Next to go on



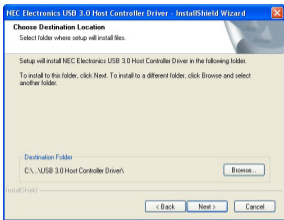
3. Click Windows Driver to install



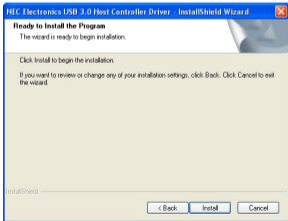
5. Select "I accept the terms of the license agreement" and click Next begin install



1. Click Next to continue



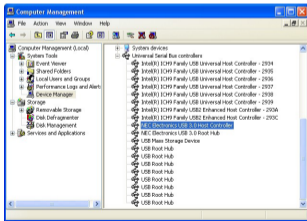
2. Click Install to begin the installation



3. Click Finish to complete the process



4. And you can find USB3.0 Host Controller in device management



Product Specifications

Specifications	
USB3.0 Host Controller	NEC uPD720200
Max. Data Transfer Rate	5.0Gbps
I/F to PC	Express card 34 slot
External Port	2 USB ports (Support Super-Speed/ High-Speed/Full-Speed/Low-Speed)
Power Input	DC +5V (extra power adapter connector $\phi=1.3\text{mm}$)
Power Output	DC +5V/ Max. 900mA
System Support	Windows XP/VISTA/7 (32/64bit)
Dimension	116.6 x 40.4 x 5 mm (L x W x H)
Operating Temperature	0°C~40°C
Storage Temperature	-20°C~60°C
Operating Humidity	0%~80% RH, non-condensing
Certification	FCC Class B, CE

* Specifications are subject to revision or update without notice



support@shintaro.com.au